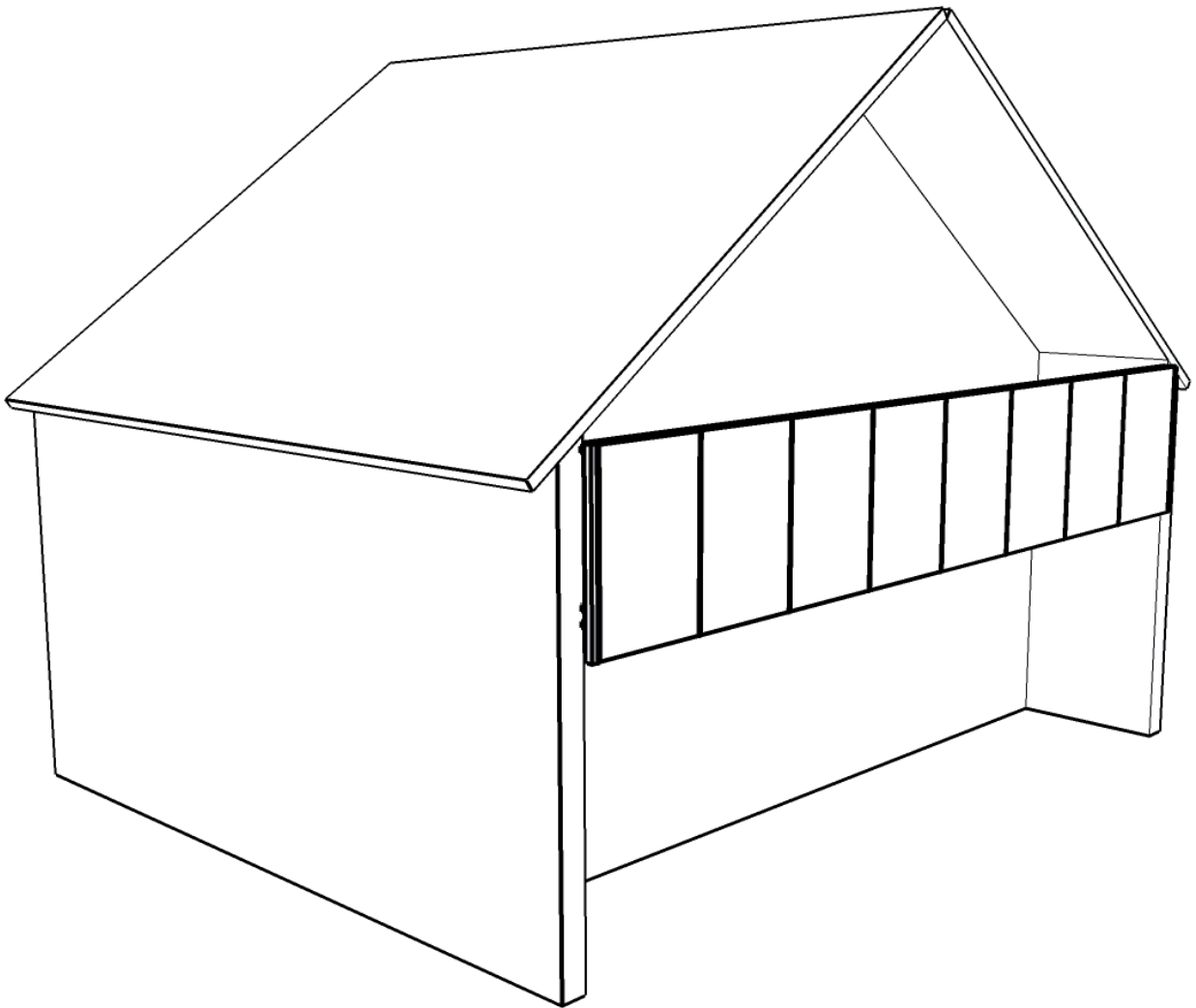


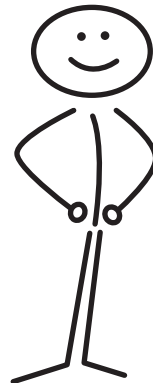
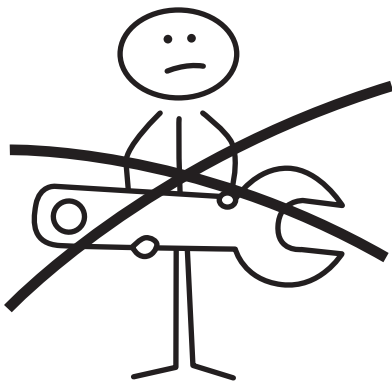
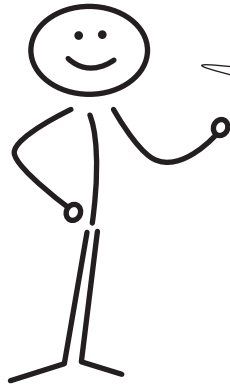
PV-BALKON



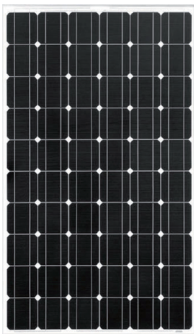
galaxy
Energy

Energy Systems for the future

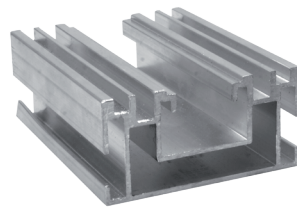
HINWEIS



BESTANDTEILE



PV-MODUL



80X40 PROFIL

61030018



KLEMMHALTER

61031510



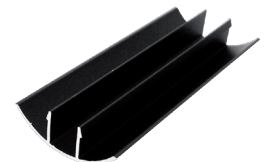
KREUZVERBUND

61031006



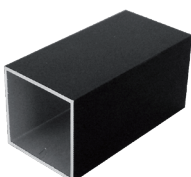
MITTELKLEMME

61031009



DECKSCHIENE

61034002



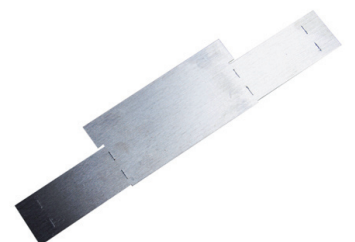
QR-ROHR

19000312



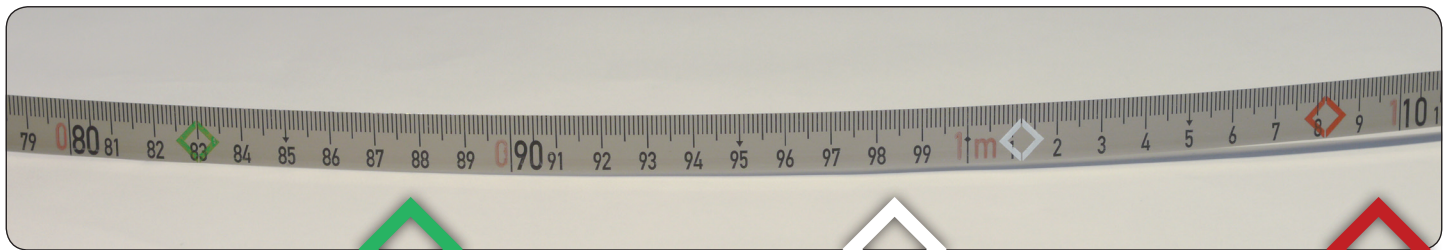
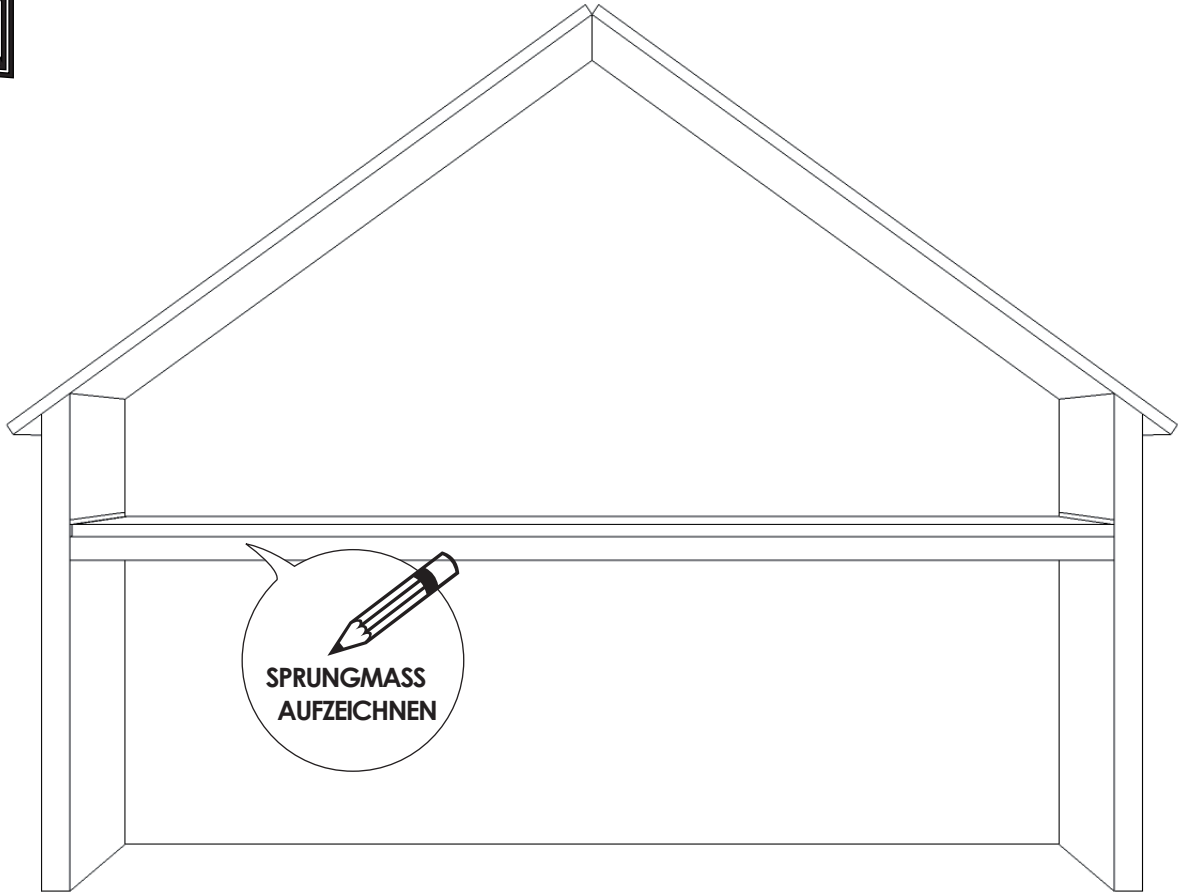
QR-DECKEL

61030013



PROFIL-DECKEL

61030033



Kleines Solarmodul
GS185m bis GS200m
808x1580mm

$$808+21+1 = 830\text{mm} = 0,830\text{m}$$

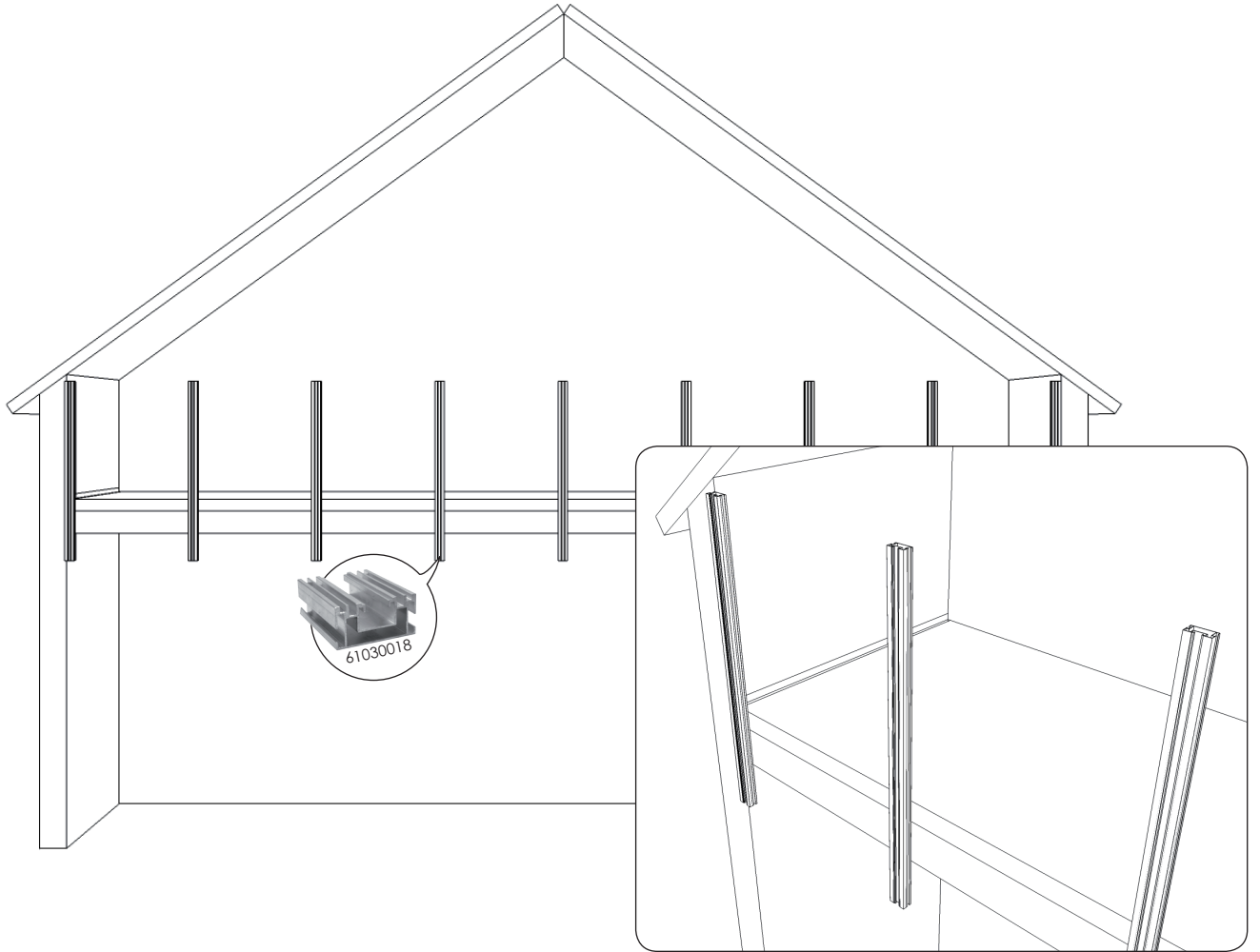
Großes Solarmodul
von GS245m bis GS255m
990x1640mm

$$990+21+1 = 1012\text{mm} = 1,012\text{m}$$

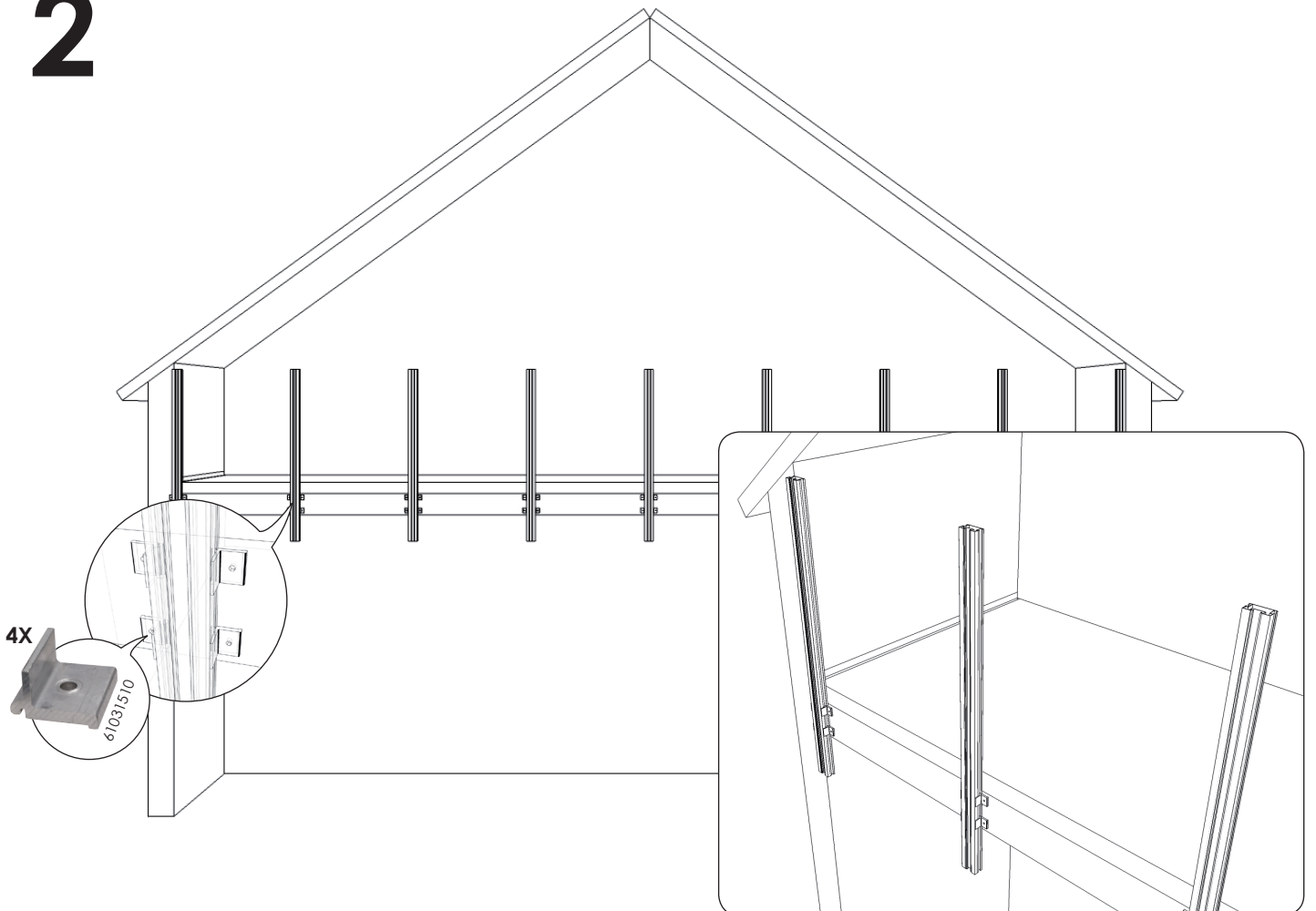
Großes Solarmodul mit 96-Zellen
von GS250m-96 bis GS270m-96
1060x1575mm

$$1060+21+1 = 1082\text{mm} = 1,082\text{m}$$

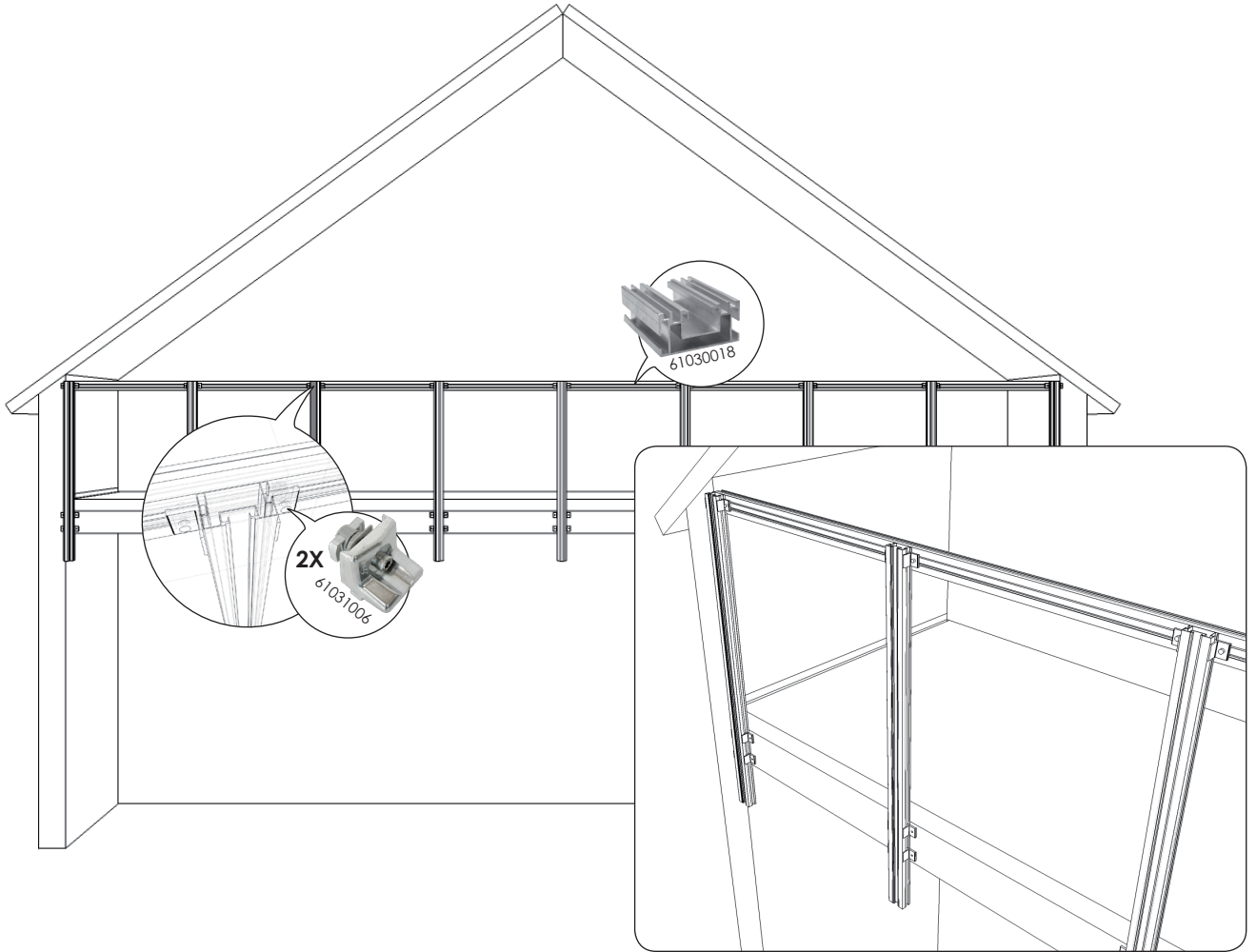
1



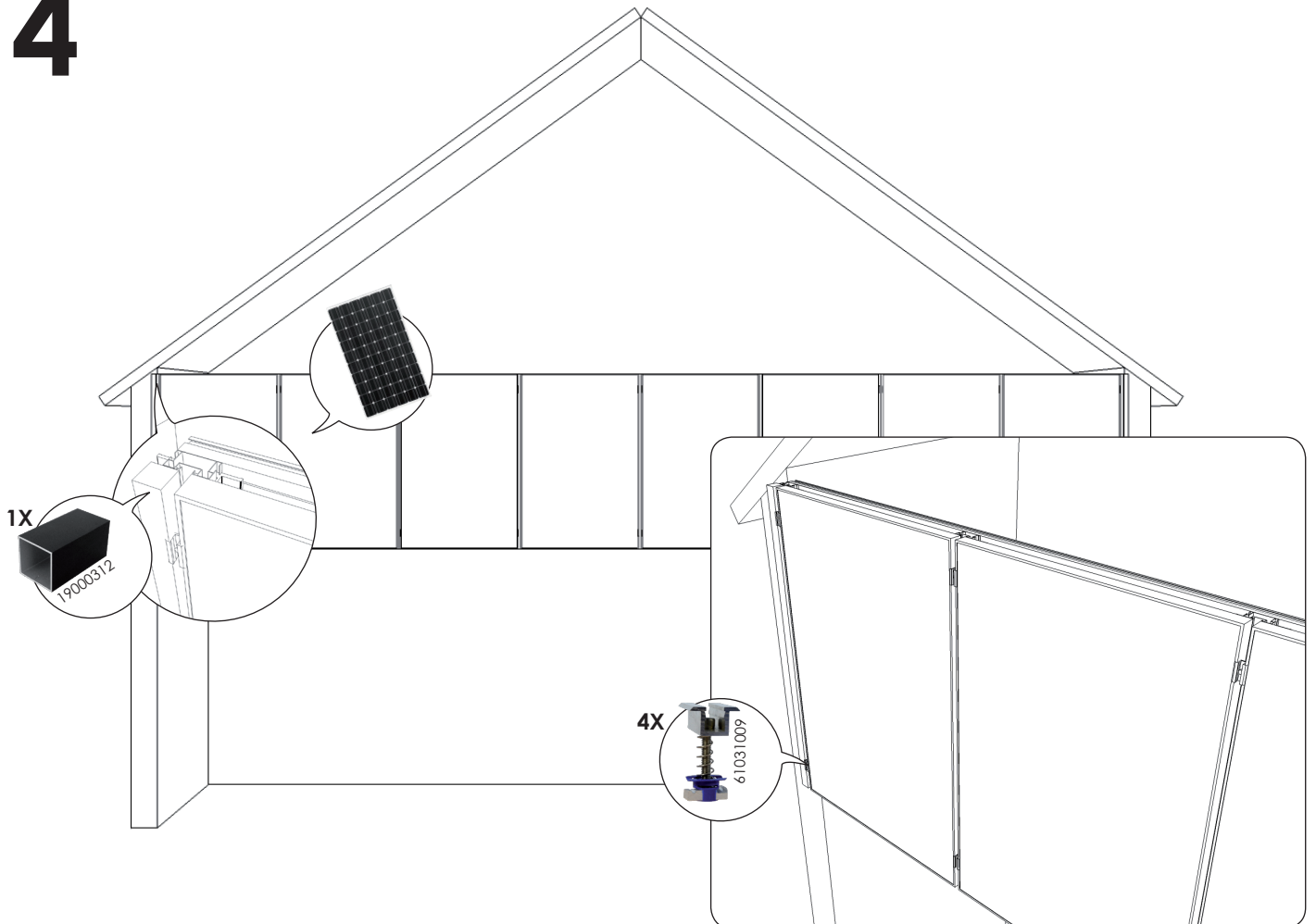
2



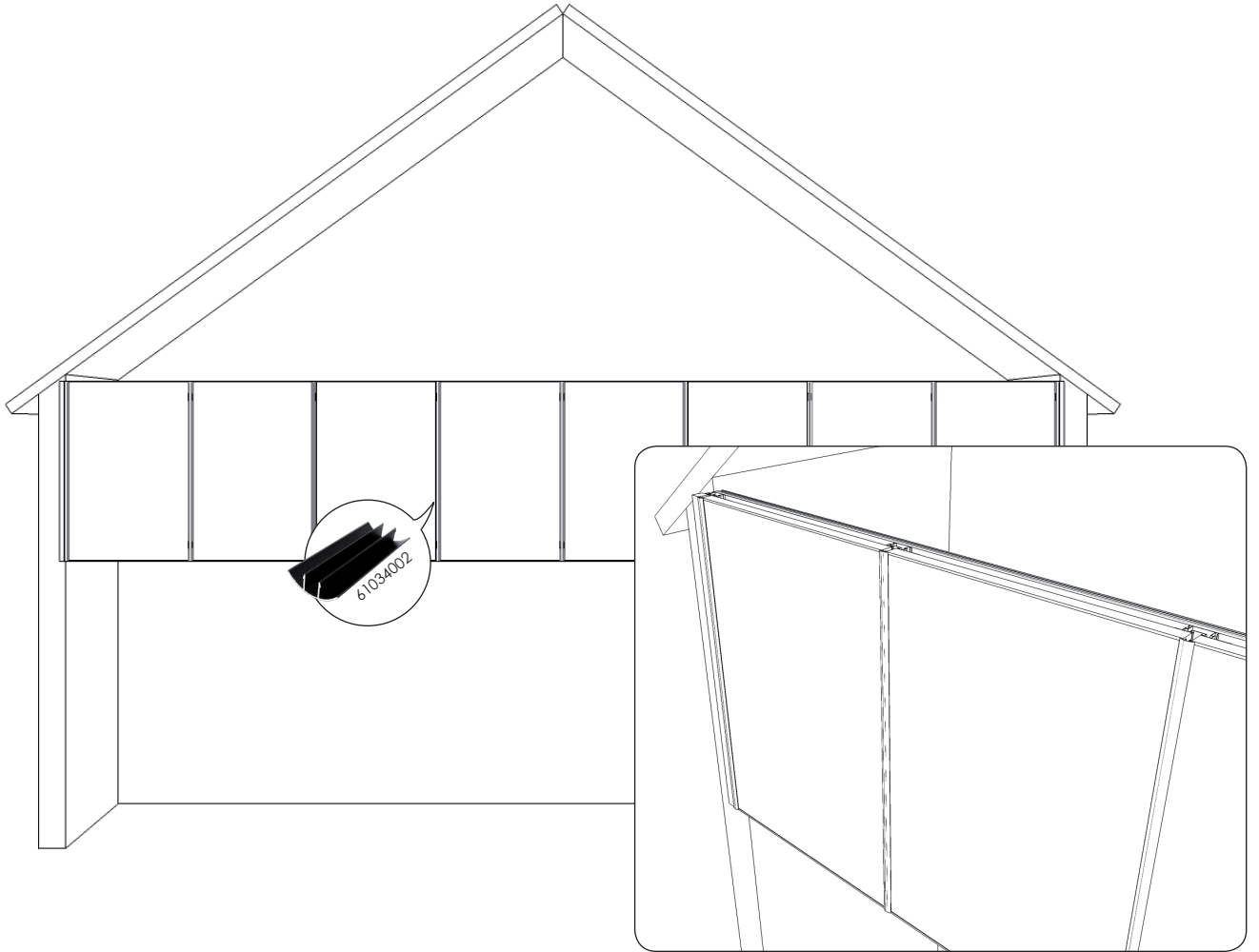
3



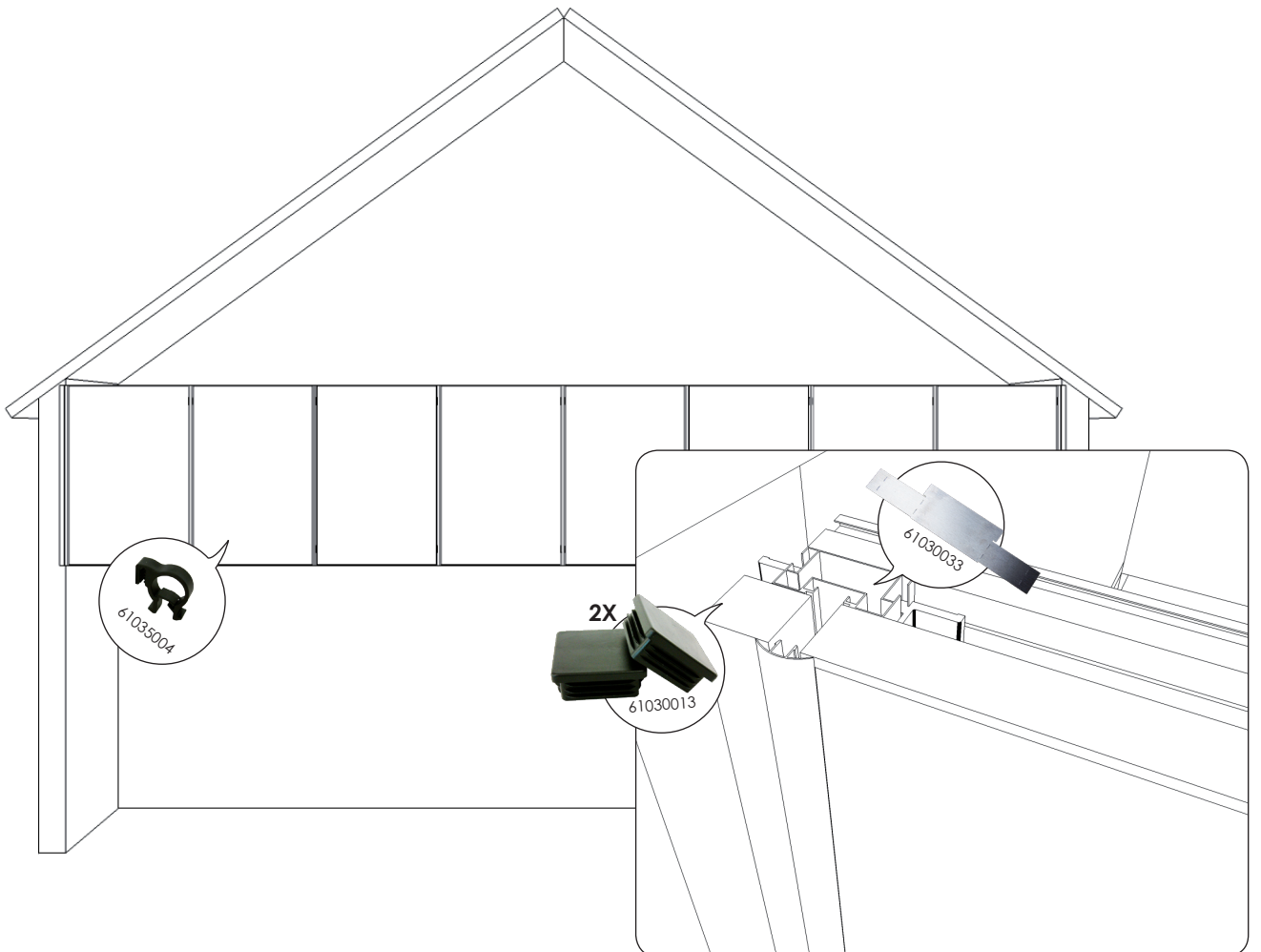
4

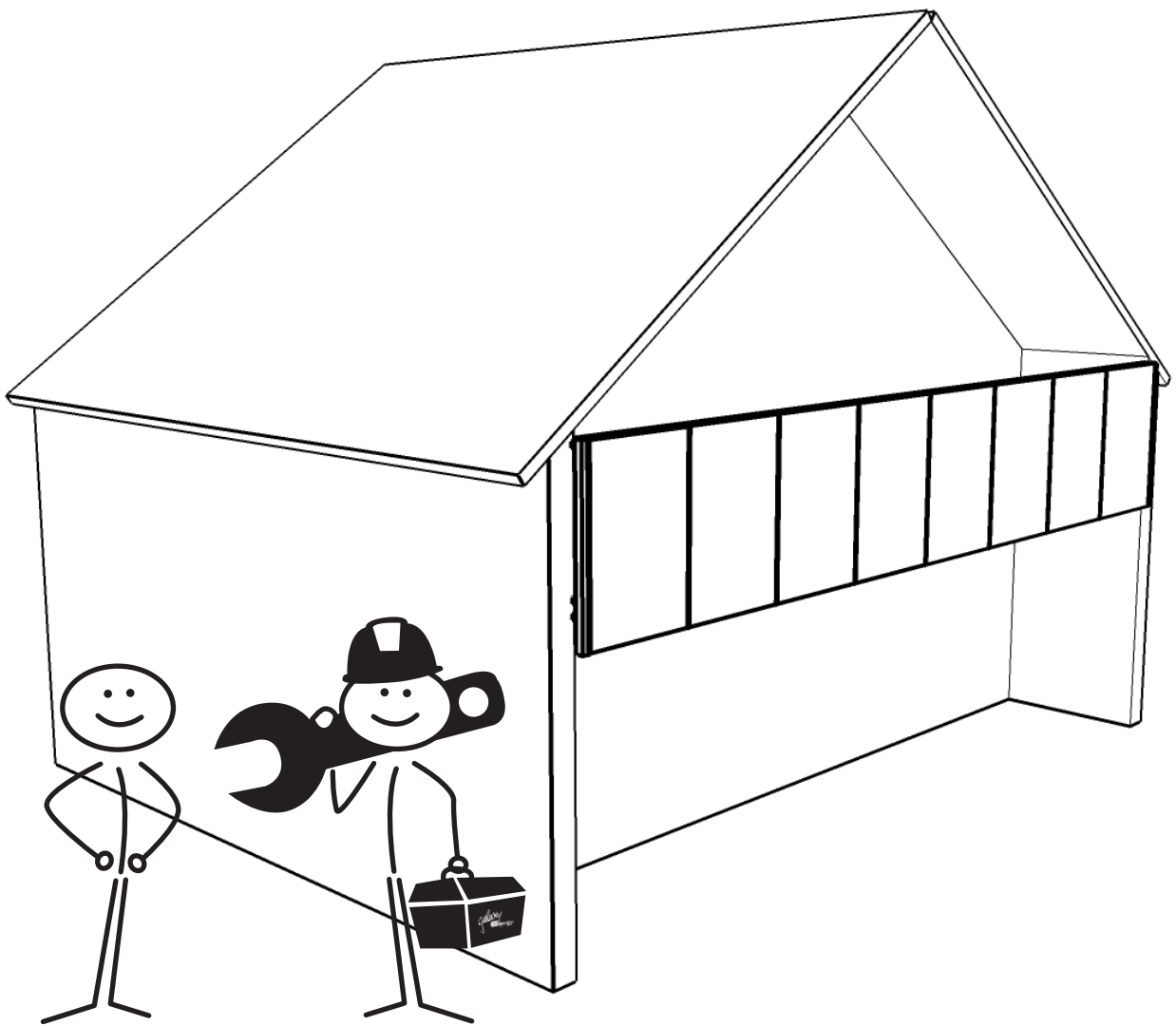


5



6





Energy Systems for the future

Galaxy Energy GmbH
Sonnenstrasse 2
89180 Berghülen

Telefon +49 (0)7344 / 92450 - 0
Telefax +49 (0)7344 / 92450 - 101
info@galaxy-energy.com

Specifications are subject to change without prior notice.

www.galaxy-energy.com